

2-HORSE STRAIGHT LOAD RUNABOUT GOOSENECK

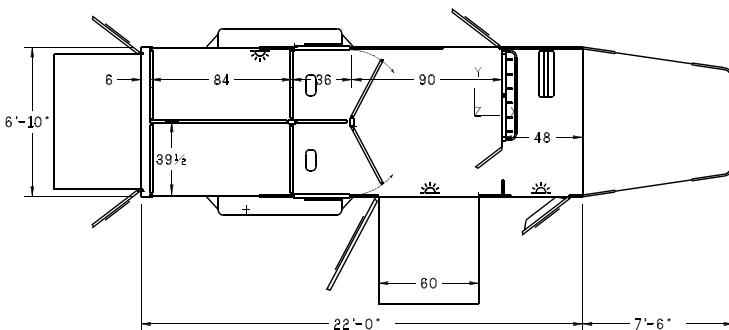


The Runabout series of entry level, all aluminum trailers are designed from the ground up to provide our customers 4-Star quality at an economical price. We accomplished this with a design that restricts the width to 6'-10", and limits the options for additional length. The benefits realized in this design include fewer parts in the suspension area, elimination of inside fenders and reduced manufacturing expenses. There is also a significant weight reduction compared with similar sized Deluxe models.

The contemporary floor plan shown here originates from the suggestions of our customers and is sometimes referred to as a '2 plus 1'; Two side by side stalls separated from a box stall by stud gates.



All 4-Star Trailers Come With Our
8 YEAR WARRANTY



STANDARD FEATURES

- 22'-0" L x 6'-10" W x 7'-6" H
- 2 - 5200# Torsion 102" Axles - Electric Brakes & 8 Bolt Hub
- Four 10 Ply Radial Trailer Tires
- 16" Aluminum Wheels
- 2 5/16" Adjustable Coupler
- Single Drop Leg
- Removable Jack Handle
- Tapered Gooseneck w/2 Windows
- Polished Cast Corner Caps
- Pre-Painted White Exterior
- 48" Tack Room
- Carpet On Tack Only
- Large Walk-Thru Door w/ Window & Breast Bar
- 18" x 64" Hip Window w/Bars Each Side Horse Compartment
- 60" Wide x 58 1/2" Tall Side Ramp With Dutch Door w/Window And Padded Safety Chain
- Full Width Ramp at Rear w/Dutch Doors Above
- Permanent Bulkhead Wall w/18" Clear opening Door Into Horse Compartment
- Smooth Ribbed Aluminum Floor
- Floor Mats Full Length Of Trailer

- Insulated & Double Walled Full Length Horse Compartment
- Rubber Lined Walls in Horse Compartment
- Full Height Stud Doors W/Air Flow Bars Hinged On Removable Post
- Removable Divider w/Withers And Swinging Head Shield Pinned To Butt Bars At Rear
- Two-Way Roof Vent Per Horse
- 5 Trailer Ties - Inside
- 3 Trailer Ties - Outside
- Covered Breast & Butt Bar Each Horse
- 3 Dome Lights
- Covered Saddle Rack Per Horse
- Blanket Bar
- Brush Tray
- (6) Bridal Hooks
- High Turn Signals
- L.E.D. Lighting
- D.O.T. Tape

POPULAR OPTIONS

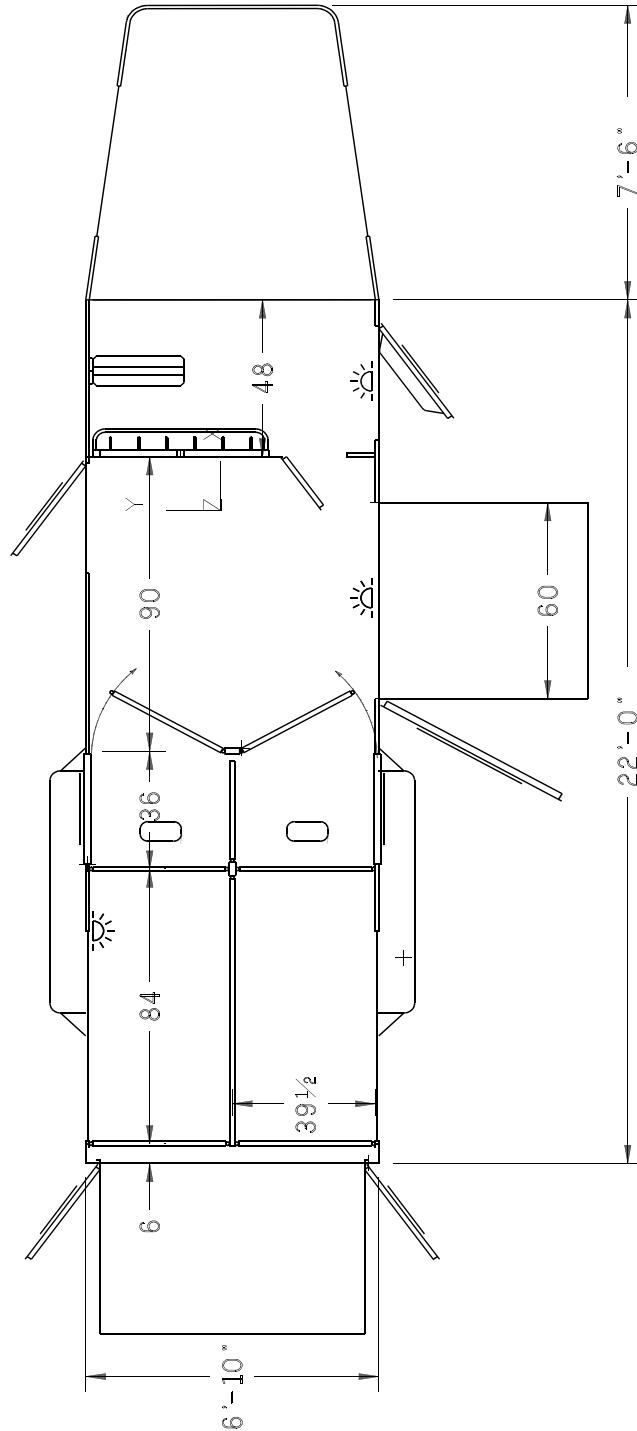
- Quiet Ride Components
- Custom Graphics
- Removable Head Shield
- Stow Away Breast Bar At Side Ramp
- Feed Bags
- Loading Lights
- Additional Running Lights
- Drop Down Doors
- Stainless Steel On Nose
- WERM Flooring
- Easy Lift Ramp



4-Star Trailers, Inc.
10,000 N.W. 10th St. Oklahoma City, Ok 73127
800-848-3095 • www.4startrailers.com

All dimensions are approximate. Photos may show options.

2-HORSE STRAIGHT LOAD RUNABOUT GOOSENECK



4-Star Trailers, Inc.
10,000 N.W. 10th St. Oklahoma City, Ok 73127
800-848-3095 • www.4startrailers.com
All dimensions are approximate. Photos may show options.

PTXG2S227669.FM