

2-HORSE STRAIGHT LOAD



RUMPER PULL

This Straight Load model, featuring walk-thru mangers with access to dressing room from the horse compartment, really packs a lot of features into a small package! The divider is pinned to a permanent post at the front permitting it to swing in either direction when the butt bars at the rear are un-pinned. This feature is useful for horses who may be reluctant to enter a small opening as the divider can be swung all the way to the side wall at the rear of the trailer.

All 4-Star Trailers Come With Our

8 YEAR WARRANTY



- Floor Mats Full Length Horse Compartment
- Insulated & Double Walled - Head/Hip of Horse
- Rubber Lined Walls in Horse Compartment
- 3' Manger w/ Walk-Thru Door To Front Dressing Room
- Two-Way Roof Vent Per Horse
- 2 Trailer Ties Per Horse - Inside & Outside
- Standard Removable Divider w/ Withers Shield
- Chain From Manger to Divider Each Side
- 2 Breast/Butt Bars
- 3 Dome Lights
- Saddle Rack Per Horse - Under Mangers
- 10 Bridle Hooks
- 2 Brush Trays
- 1 Blanket Bar Under Each Saddle Rack
- High Turn Signals
- Halogen Load Light
- L.E.D. Lighting
- Custom Graphics

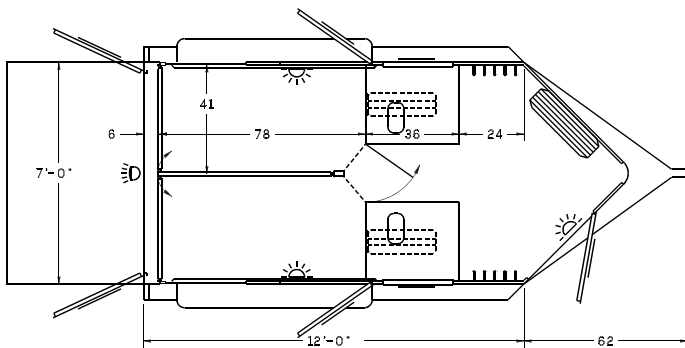


STANDARD FEATURES

- 12'-0" L x 7'-0" H x 7'-0" W
- 2 - 3500# Tandem Torsion Axles
- Electric Brakes
- Five 6 Ply Radial Trailer Tires
- 15" Aluminum Wheels
- 2 5/16" Coupler
- Pad Type Jack
- Polished Cast Corner Cap
- Pre-Painted White Exterior on Smooth Aluminum
- Dressing Room Approx. 25 Sq. Ft.
- Carpet on Dressing Room Floor
- Dressing Room Door w/ Window
- 2 Drop Down Feed Doors w/ Windows
- 2 Escape Doors
- Slider Hip Window At Each Horse
- Rear Ramp w/ Dutch Doors w/ Windows
- Smooth Ribbed Aluminum Floor

POPULAR OPTIONS

- A/C Brace
- Quiet Ride Components
- Additional Height
- Hayrack
- WERM Flooring
- Removable Baby Panel
- Widths Up To 8'-6"

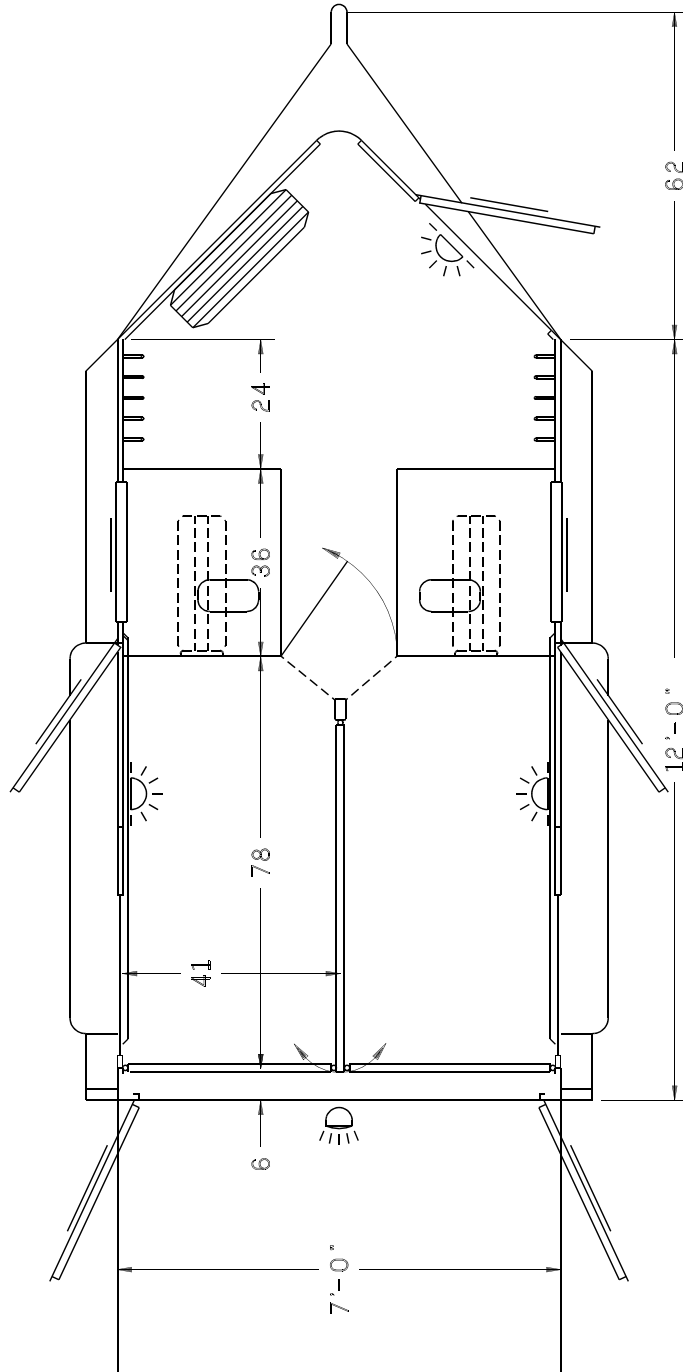


4-Star Trailers, Inc.
 10,000 N.W. 10th St. Oklahoma City, Ok 73127
 800-848-3095 • www.4startrailers.com
 All dimensions are approximate. Photos may show options.



2-HORSE STRAIGHT LOAD

RUMPER PULL



10,000 N.W. 10th St. Oklahoma City, Ok 73127
800-848-3095 • www.4startrailers.com
All dimensions are approximate. Photos may show options.